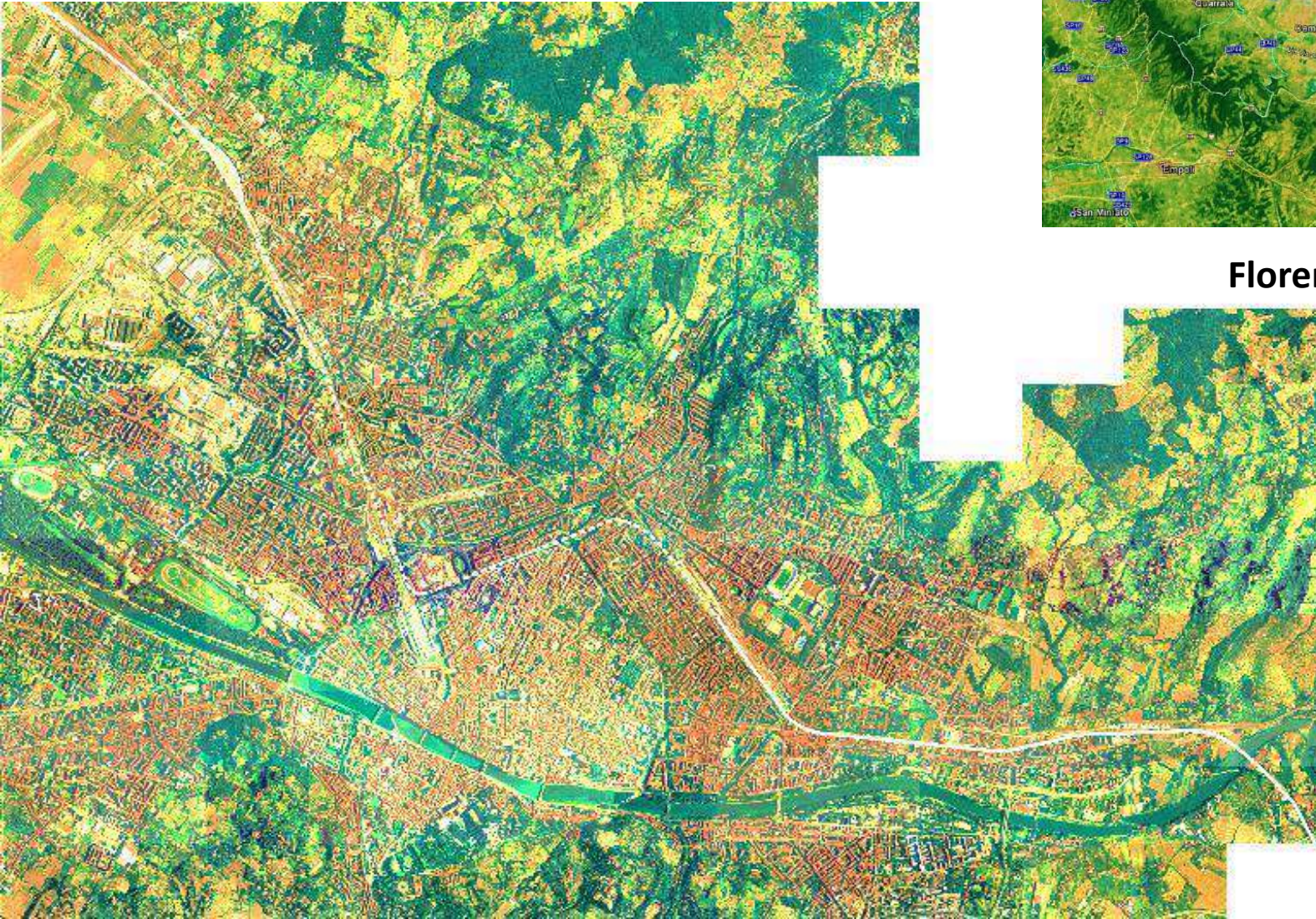


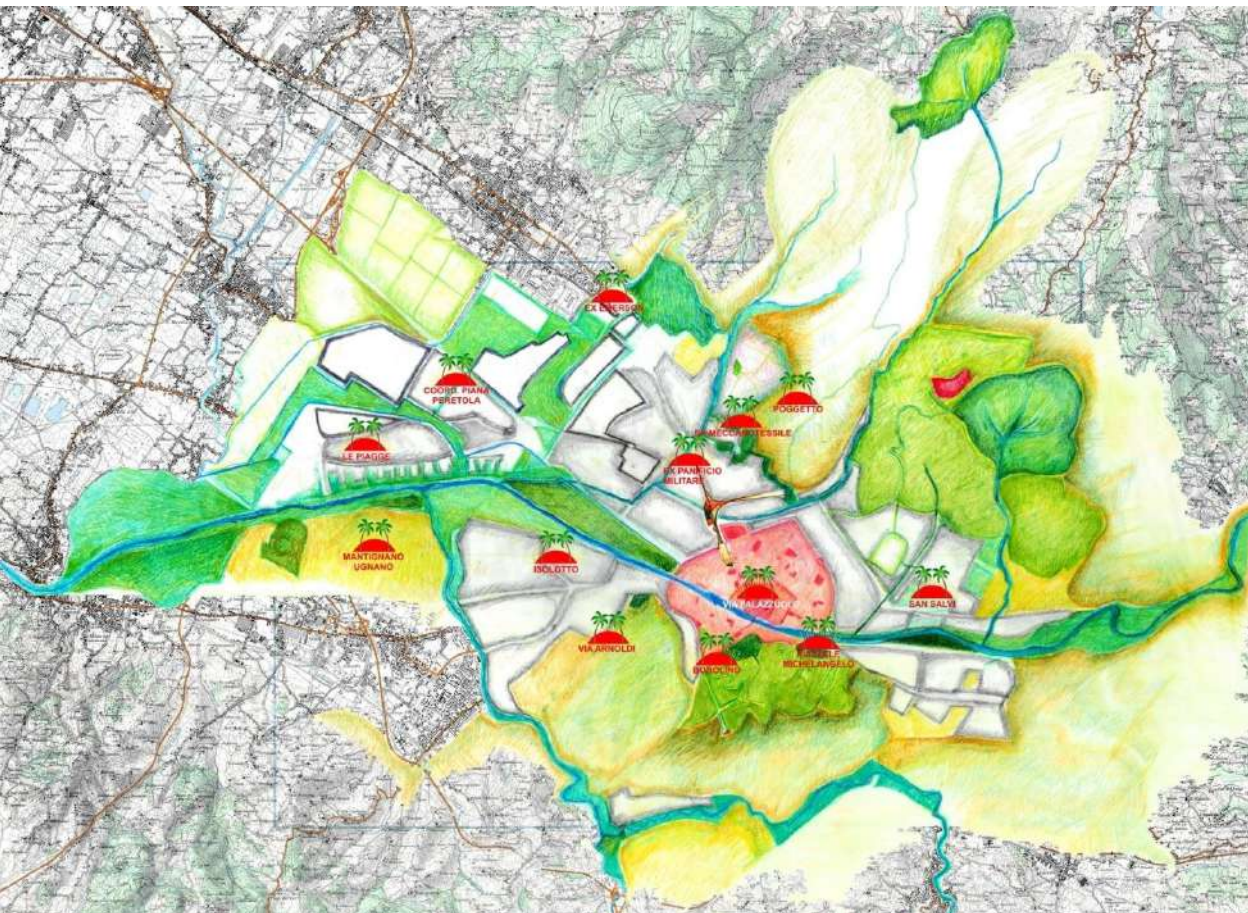
The Landscape Oases can germinate among the arid grounds in Florence



Florence and its plain
2010/2015

The *hopeful reaction*, beyond the devastation is still possible !

A self-managed landscape production, developed through participative activities could be a suitable way to encourage this 'hopeful reaction' by a *participative eco-therapy*

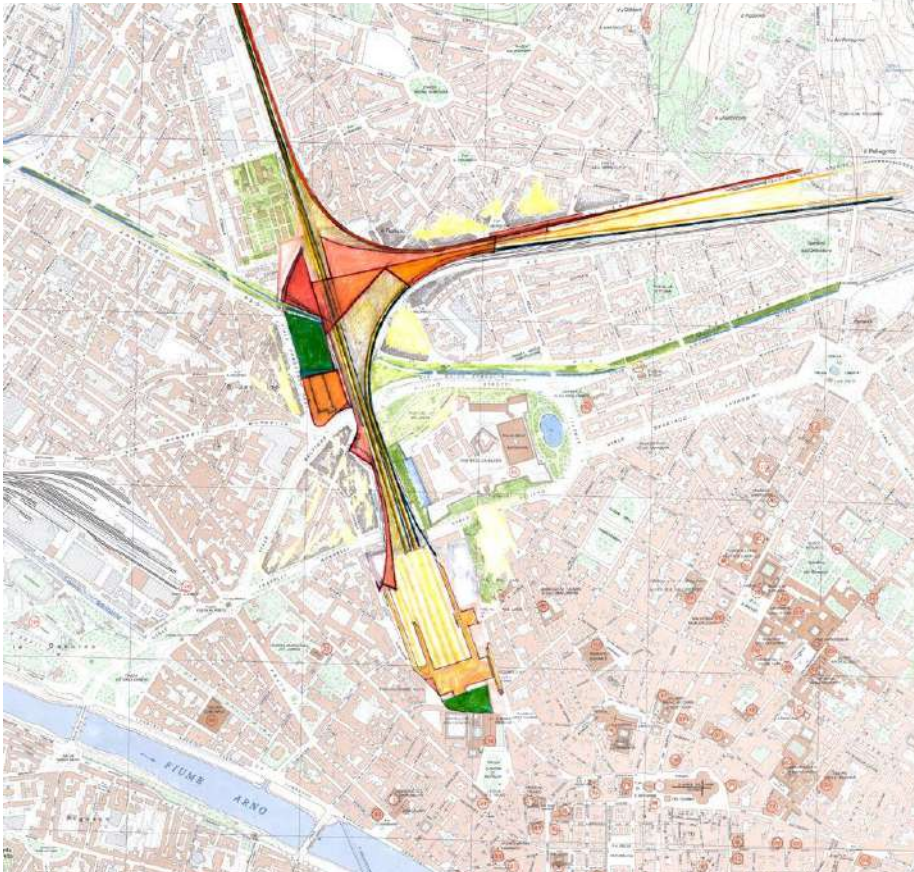
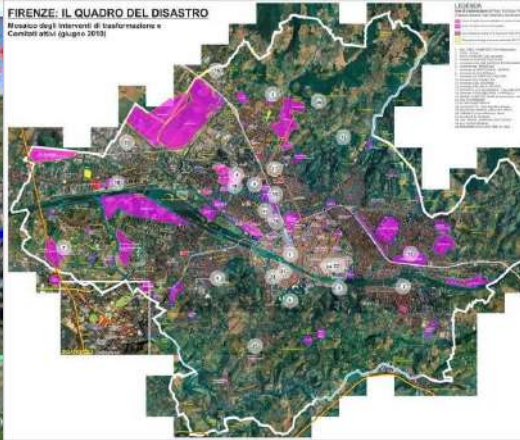


A Synthetic view of Metropolitan oases in Florence, 2010 (R.Micarelli and G.Pizziolo)

Florence can turn into a living city, set in a living territory, a territory that nurtures and sustains the city, while the city marks the territory in a reciprocal evolutionary process. The city, surrounded by the hills and the plain, crossed by its river Arno can create a condition and a context of a very

Many kinds of research-actions characterize these *Landing Places*: Their management by Solidarity groups-micro economies, cultural activities, consumers organization, spatial aesthetic transformations, environmental microbalance control, all practiced through different synergic combinations related to wider concrete and informational realities (territorial, urban, metropolitan).

This PROPOSAL MANIFESTO of a process project for the City of Florence concerns in particular the sustainable mobility, against the Macro Public Works projected by the Territorial Governments



The alternative INTEGRATED MOBILITY SYSTEM versus the devastating URBAN UNDERGROUND CROSSING